

# LED BLANCO FRIO 3mm



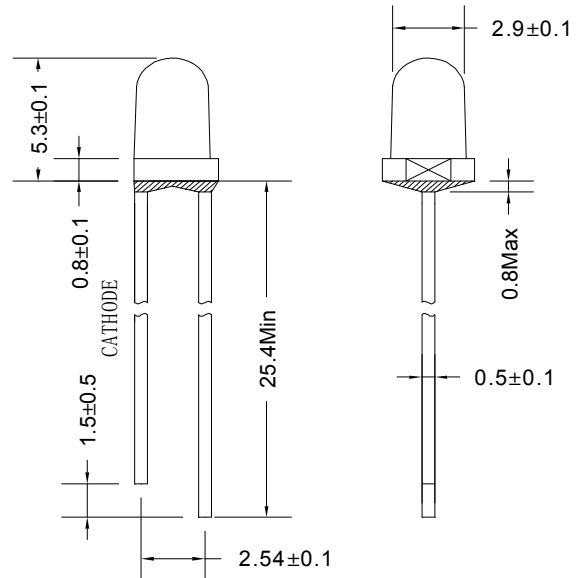
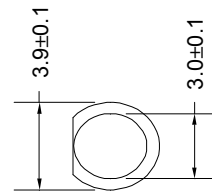
**ATTENTION**  
OBSERVE PRECAUTIONS  
FOR HANDLING  
ELECTROSTATIC  
DISCHARGE  
SENSITIVE  
DEVICES

## Features/# \$ "

- Single color/ !"
- High bright output/#\$ % &'
- Low power consumption/()\*
- High reliability and long life  
/+, -#. /01
- RoHS compliant/23 RoHS 45

## Descriptions/% & "

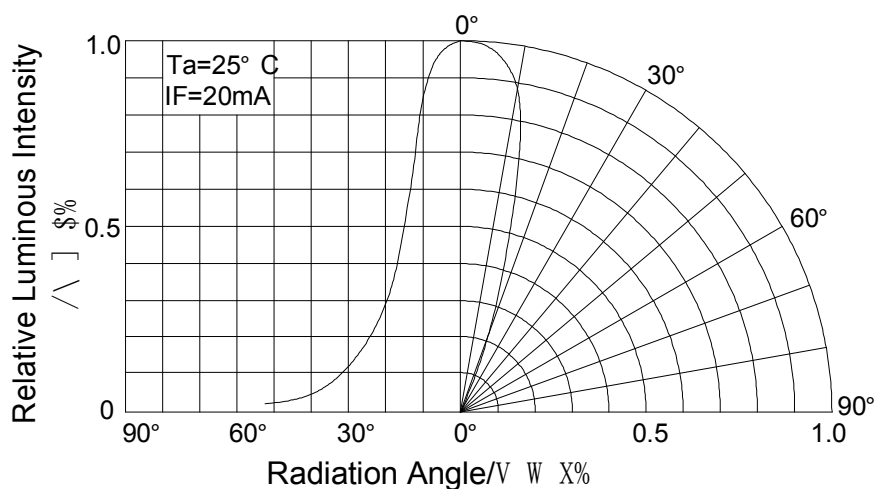
- Dice material/6789: GaInN
- Emitting Color/;"<! :  
Super Bright White/#\$%="
- Device Outline/>?@A:  
B 3mm Cuppy Type/3mm CA
- Lens Type/DE<! :
- Water Clear/F!GH



### NOTE/' ( :

- All dimensions are millimeters/IJKL M : mm.
- Tolerance is +/-0.20mm unless otherwise noted/N 40PQRSTU 0.20mm

### DIRECTIVITY/Y Z[-



## Absolute maximum ratings/极限参数 (Ta = 25℃)

Parameter 参数	Symbol 符号	Test Condition 测试条件	Value 数值		Unit 单位
			Min.	Max.	
Reverse Voltage 反向电压	VR	IR = 30 $\mu$ A	5	--	V
Forward Current 正向工作电流	IF	----	----	25	mA
Power Dissipation 损耗功率	Pd	----	----	90	mW
Pulse Current 正向峰值电流	Ipeak	Duty=0.1mS, 1kHz	----	100	mA
Operating Temperature 工作温度范围	Topr	----	-40	+85	℃
Storage Temperature 储存温度范围	Tstr	----	-40	+100	℃

## Electrical and optical characteristics/光电参数 (Ta = 25℃)

Parameter 参数	Symbol 符号	Test Condition 测试条件	Value 数值			Unit 单位
			Min.	Typ.	Max.	
Forward Voltage 正向电压	VF	IF = 20mA	----	3.2	3.6	V
Reverse Current 反向电流	IR	VR = 5V	----	----	30	$\mu$ A
Luminous Intensity 发光强度	IV	IF = 20mA	----	5000	----	mcd
Viewing Angle 指向角度	2 $\theta$ 1/2	IF = 20mA	----	30	----	Deg.

## Luminous Intensity Bins Chart/亮度等级 (Ta = 25℃)

Bin	V	W	X	Y	Z1
Min	2000	3000	4000	6000	8000
Max	3000	4000	6000	8000	10000

## Typical electrical/optical characteristic curves/光电特性曲线:

Fig.1 正向电流 Vs. 正向电压

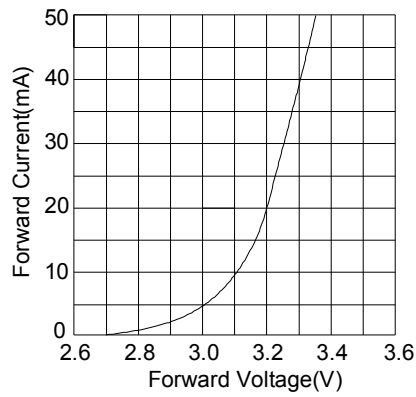


Fig.2 相对亮度 Vs. 正向电流

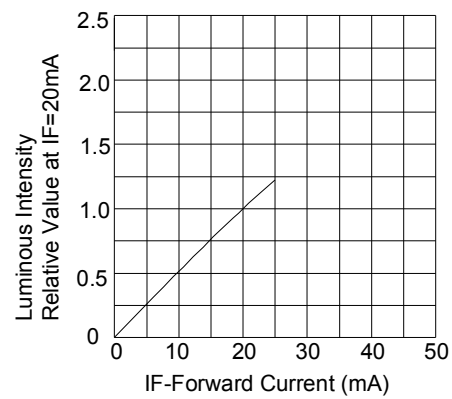


Fig.3 正向电流 Vs. 环境温度

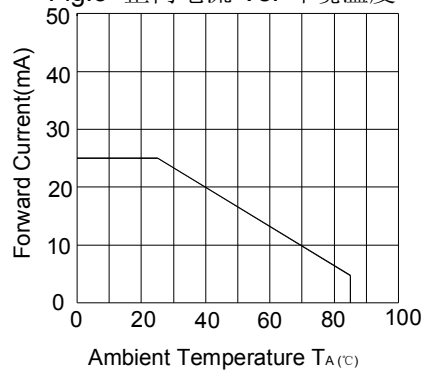


Fig.4 相对亮度 Vs. 环境温度

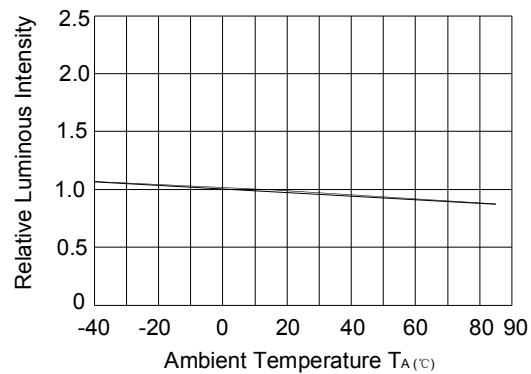


Fig.5 相对亮度 Vs 波长

