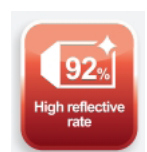


DEMASLED



LED STREETLIGHT CO-L305



DEMASLED

2

Application

These street lights are designed for **main road, highway, tunnel, bridge, avenues, highways, crossing, rural road, industrial estate, national road, parks, campus, boat dock, remote area, military base, farm, etc**



Advantage

1. Perfectly lighting design ensures brightness and uniform illumination, and meets different requirements of road lighting.
2. Using Bridgelux high-lumen integrating encapsulated LED chip.
3. Well-designed heat radiation, reaching the best heat radiation effect.
4. FIN aluminum alloy housing guarantees its high soundness;
5. Long life power driver ensures above 50000 hours.
- 6.Environmental friendly and energy-saving, no mercury or lead.
- 7.Consume 50%-70% less power than HID street light

DEMASLED

Specifications

Electrical Parameters	Input Voltage	AC85-265 V		Power Factor		> 0.90
	LED Type LED	BridgeLux /CREE		LED Initial Flux		120lm-130 lm/W (6500K)
	Working Life	50000 hours		CCT		2700-6500 K
	IP Grade	IP65		Working Temperature		-40℃ +60℃
Model	LED Power	Illumination			Lamp Size (mm)	Net Weight (kg)
		Mount Height 6M	Mout Height 8M	Mount Height 10M		
CO-L305-40W	40W	40 lux	24 lux	17 lux	192*371* 88	2.9+5%
CO-L305-80W	80W	80 lux	48 lux	33 lux	495*292* 98	5.7 +5%
CO-L305-120 W	120W	128 lux	71 lux	38 lux	587*292* 98	7.1 +5%
CO-L305-160 W	160W	171 lux	102 lux	70 lux	679*292* 98	8.4+5%
CO-L305-200 W	200W	215 lux	120 lux	82 lux	771*292* 98	9.7+5%
CO-L305-240 W	240W	255 lux	148 lux	97 lux	863*292* 98	11.1+5%

DEMASLED



Waterproof IP65

The silicone circle sealing technology of waterproof IP65 can completely prevent dusts in regular day and water in rainstorm.



Resist Category 12 typhoon

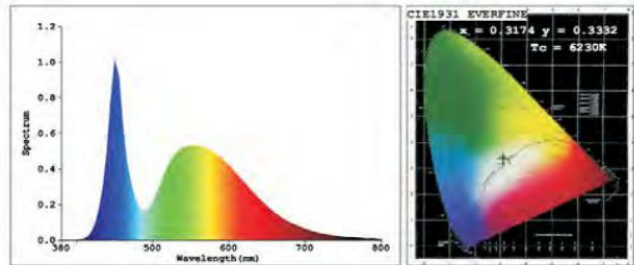
In professional wind test, which wind speed reach 35m/s, equal to the Category 12 typhoon, there is no deformation or looseness, and it is extraordinarily firm.



Good Corrosion Resistance

Processed by coating and anodizing, the housing, getting a protective shield and greatly enhance corrosion resistance, suitable for harsh environments.

DEMASLED

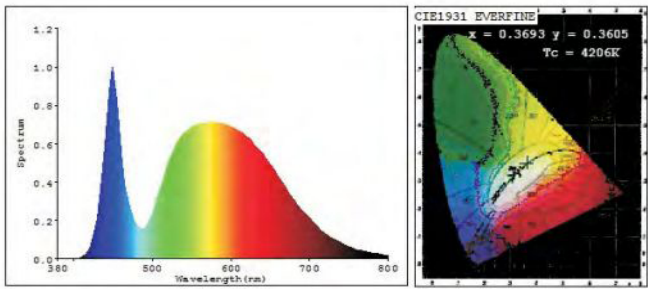


Color Parameters:

Chromaticity Coordinate: $x=0.3174$ $y=0.3332/u'=0.1995$ $v'=0.4713$
To=6230K Dominant WL:Ld=491.6nm Purity=5.4% Centroid WL:545.0nm
Ratio:R=14.0% G=81.8% B=4.2% Peak WL:Lp=450.0nm HWL:24.0nm
Render Index:Ra=75.9
R1 =74 R2 =80 R3 =82 R4 =76 R5 =74 R6 =71 R7 =85
R8 =65 R9 =-12 R10=50 R11=71 R12=44 R13=75 R14=90 R15=70



PW 6000-6500K

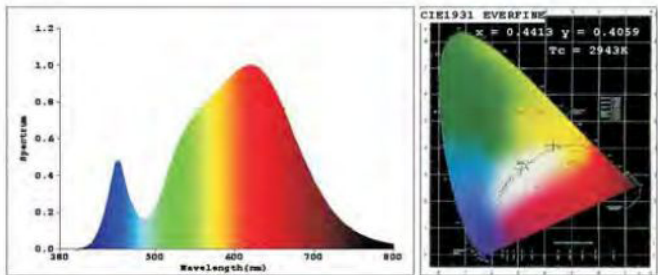


Color Parameters:

Chromaticity Coordinate: $x=0.3693$ $y=0.3605/u'=0.2243$ $v'=0.4925$
To=4206K Dominant WL:Ld=581.6nm Purity=19.0% Centroid WL:574.0nm
Ratio:R=19.3% G=77.9% B=2.9% Peak WL:Lp=450.0nm HWL:23.6nm
Render Index:Ra=81.4
R1 =82 R2 =85 R3 =83 R4 =81 R5 =80 R6 =76 R7 =88
R8 =76 R9 =34 R10=61 R11=77 R12=51 R13=82 R14=90 R15=82



NW 4000-4500K



Color Parameters:

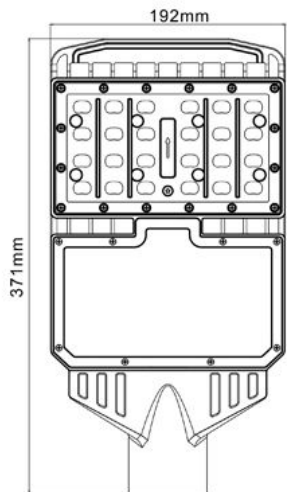
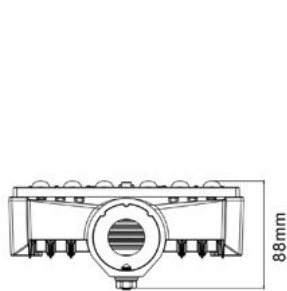
Chromaticity Coordinate: $x=0.4413$ $y=0.4059/u'=0.2526$ $v'=0.5227$
To=2943K Dominant WL:Ld=583.0nm Purity=54.3% Centroid WL:602.0nm
Ratio:R=25.2% G=73.0% B=1.9% Peak WL:Lp=620.0nm HWL:163.5nm
Render Index:Ra=85.1
R1 =85 R2 =89 R3 =90 R4 =84 R5 =82 R6 =83 R7 =91
R8 =77 R9 =44 R10=71 R11=80 R12=61 R13=85 R14=93 R15=83



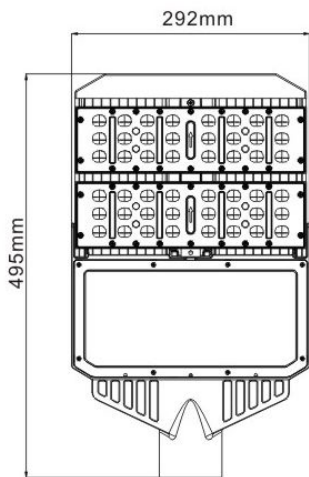
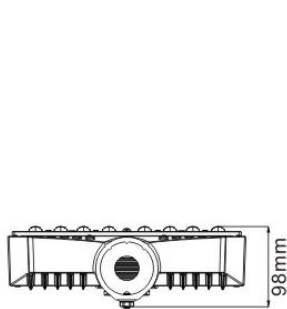
WW 2700-3200K

DEMASLED

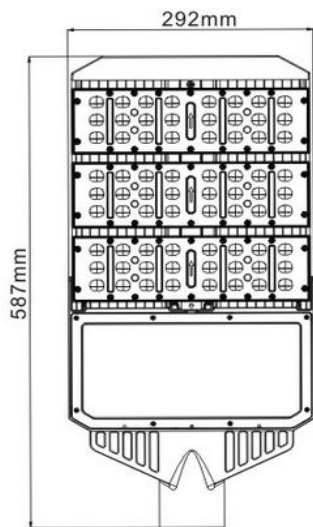
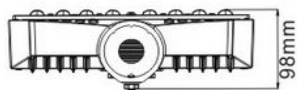
SIZE:



CO-L305-40W

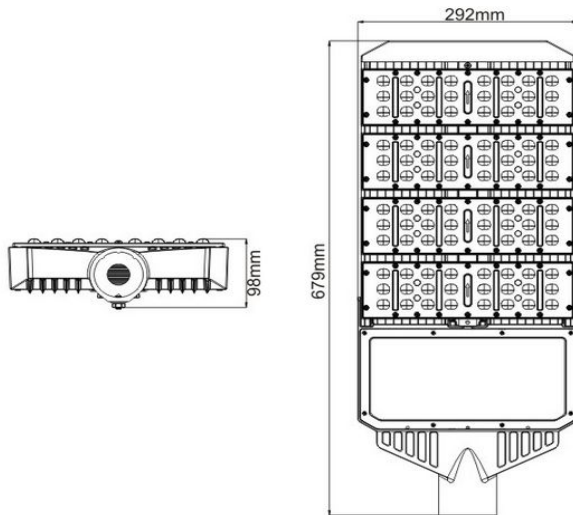


CO-L305-80W

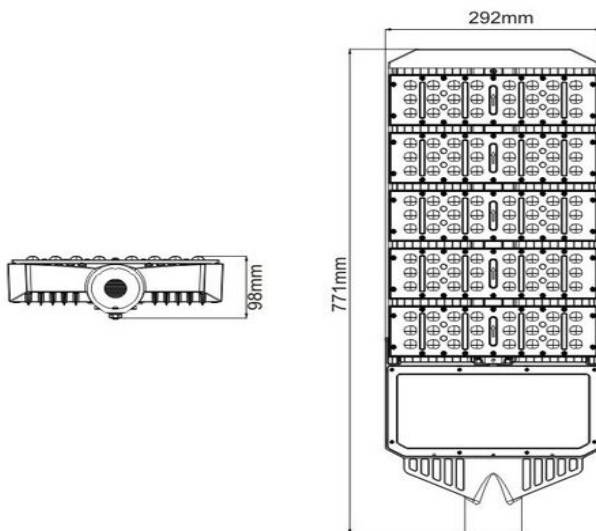


CO-L305-120W

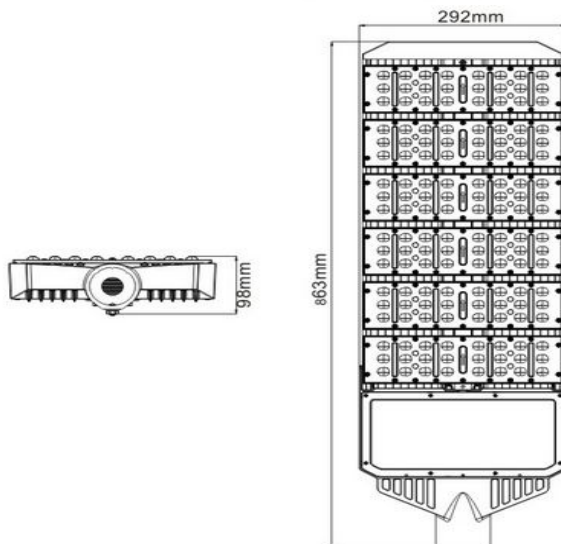
DEMASLED



CO-L305-160W



CO-L305-200W



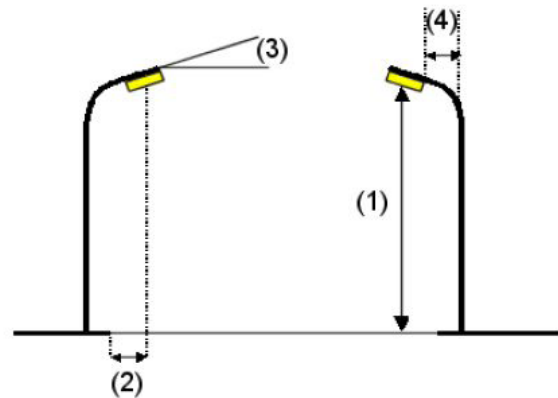
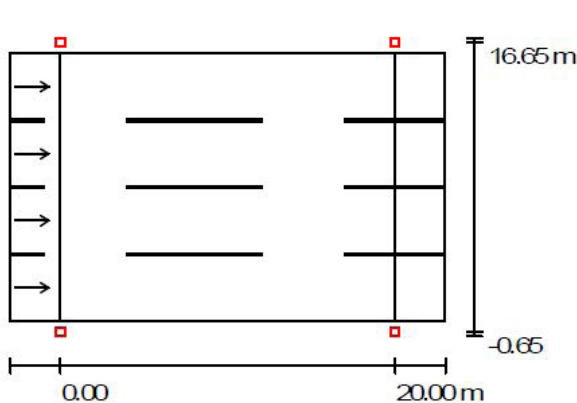
CO-L305-240W

DEMASLED

Roadway 1 (Width: 16.000 m, Number of lanes: 4, tarmac: R3, q0: 0.070)

Light loss factor: 0.67

Luminaire Arrangements



Luminaire: SHENZHEN COMING TECHNOLOGY CO., LTD CO-L305-120W
Luminous flux (Luminaire): 11585 lm
Luminous flux (Lamps): 11591 lm
Luminaire Wattage: 124.1 W
Arrangement: Double row, opposing
Pole Distance: 20.000 m
Mounting Height (1): 8.000 m
Height: 8.000 m
Overhang (2): -0.650 m
Boom Angle (3): 0.0 °
Boom Length (4): 0.000 m

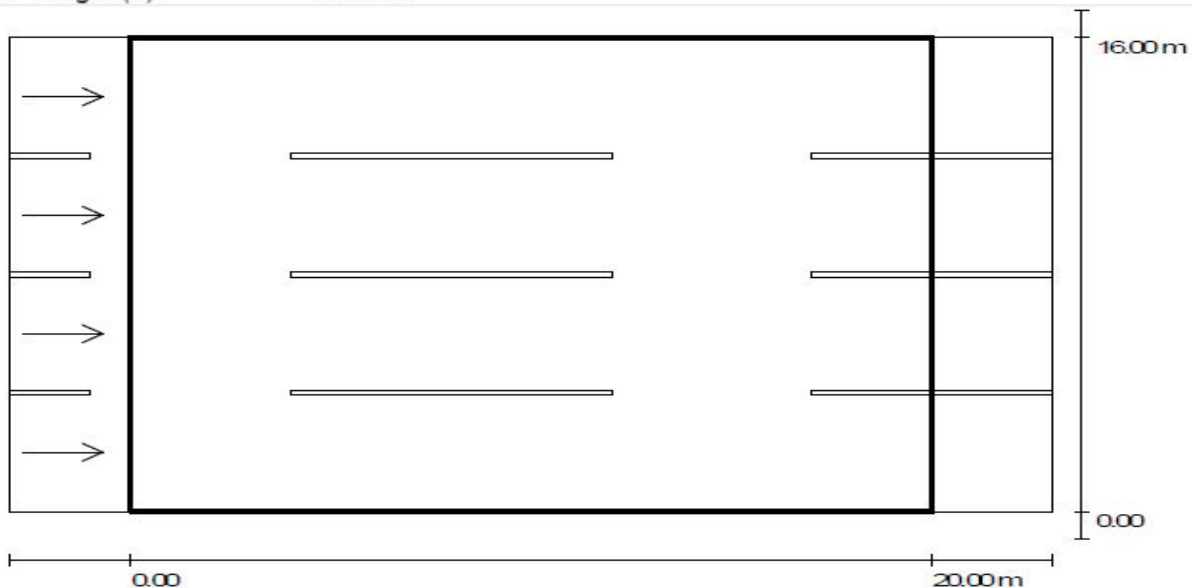
Maximum luminous intensities

at 70°: 284 cd/klm
at 80°: 86 cd/klm
at 90°: 7.84 cd/klm

Any direction forming the specified angle from the downward vertical, with the luminaire installed for use.

Arrangement complies with luminous intensity class G3.

Arrangement complies with glare index class D.6.



Light loss factor: 0.67

Scale 1:186

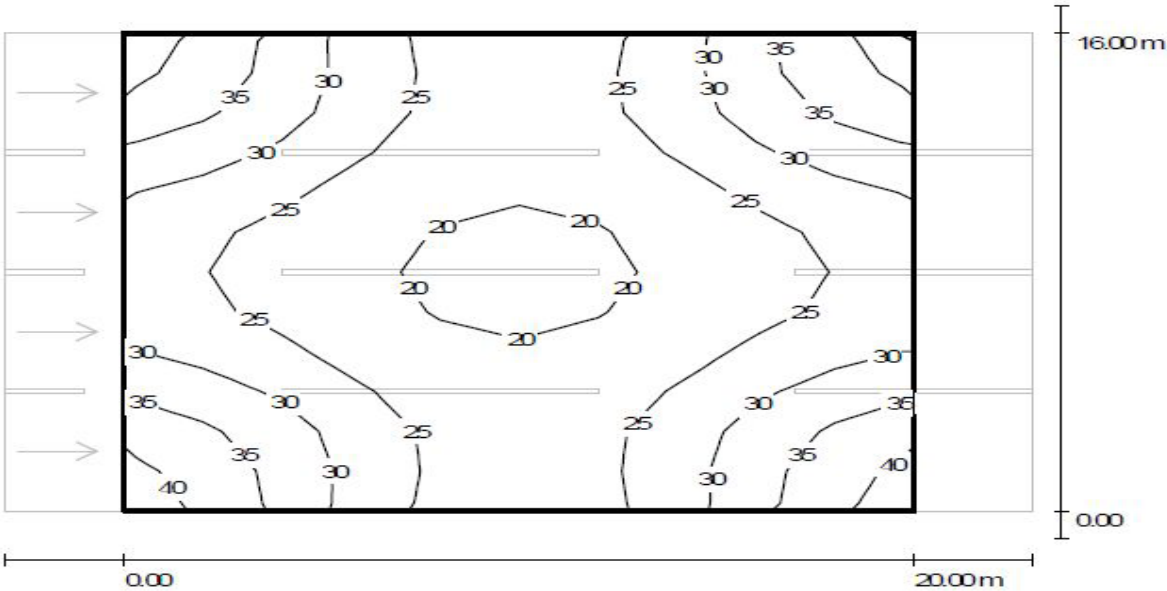
Grid: 10 x 12 Points
Accompanying Street Elements: Roadway 1.
tarmac: R3, q0: 0.070
Selected Lighting Class: ME4a

(All lighting performance requirements are met.)

Calculated values:
Required values according to class:
Fulfilled/Not fulfilled:

L_{av} [cd/m ²]	U0	UI	TI [%]	SR
1.50	0.56	0.83	7	0.77
≥ 0.75	≥ 0.40	≥ 0.60	≤ 15	≥ 0.50
✓	✓	✓	✓	✓

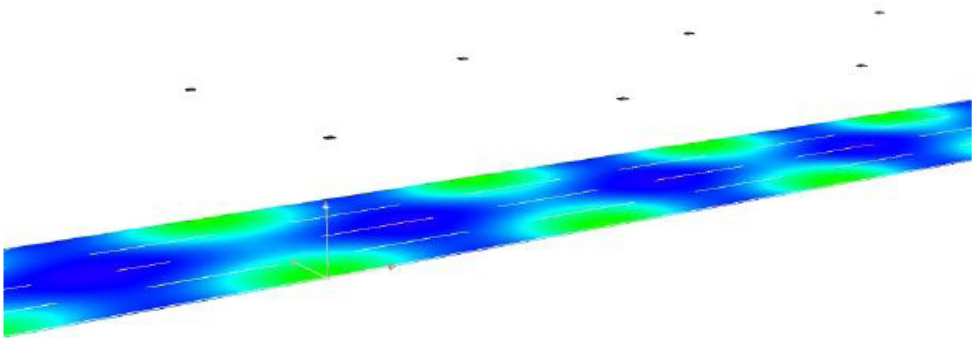
DEMASLED



Values in Lux, Scale 1 : 186

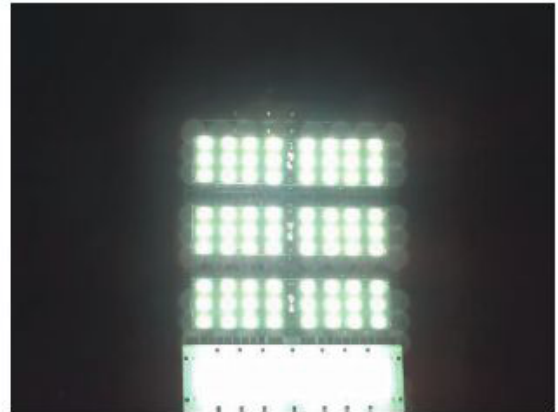
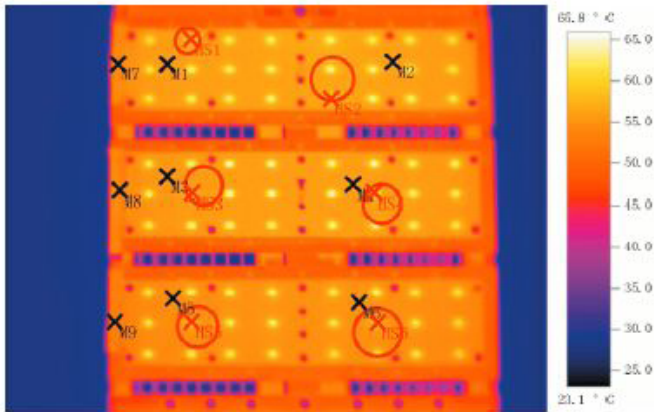
Grid: 10 x 12 Points

E_{av} [lx]	E_{min} [lx]	E_{max} [lx]	$u0$	E_{min} / E_{max}
27	19	41	0.698	0.464



DEMASLED

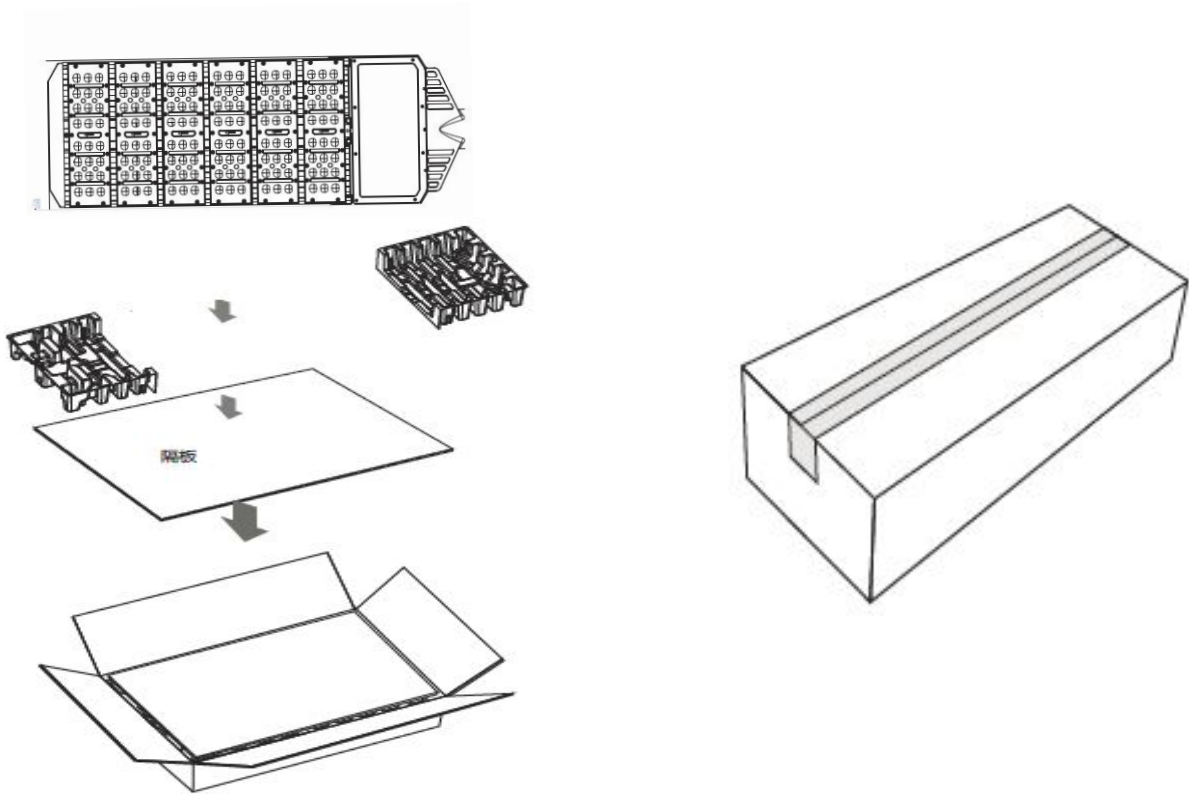
The Cooling Effectiveness Test CO-L305-240W



Measuring Object	Temperature[°C]	Radiation Rate	Reflective temperature[°C]	Remarks
Test point M1	55.7	0.95	30	Aluminum Base
Test point M2	56.3	0.95	30	Aluminum Base
Test point M3	55.0	0.95	30	Aluminum Base
Test point M4	56.2	0.95	30	Aluminum Base
Test point M5	55.4	0.95	30	Aluminum Base
Test point M6	66.8	0.95	30	Aluminum Base
Test point M7	53.1	0.95	30	Aluminum Base
Heat spot HS1	63.6	0.95	30	LED Surface
Heat spot HS2	67	0.95	30	LED Surface
Heat spot HS3	66.2	0.95	30	LED Surface
Heat spot HS4	57.6	0.95	30	LED Surface
Heat spot HS5	66.1	0.95	30	LED Surface
Heat spot HS6	64.1	0.95	30	LED Surface
Heat spot HS7	68.7	0.95	30	LED Surface

DEMASLED

Packaging



Model	Weight KG	Carton		
		Size of Carton	Gross Weight of Carton	PCS/Carton
CO-L305-40W	2.9+5%	49*39*18 cm	6.2	1
CO-L305-80W	5.7 +5%	62*42*15 cm	8.2	1
CO-L305-120W	7.1 +5%	70*42*15 cm	9.6	1
CO-L305-160W	8.4+5%	78*42*15 cm	11.2	1
CO-L305-200W	9.7+5%	88*42*15 cm	12.3	1
CO-L305-240W	11.1+5%	96*42*15 cm	13.5	1

DEMASLED



DEMASLED

