

DEMASLED

Led Filament Bulb C35

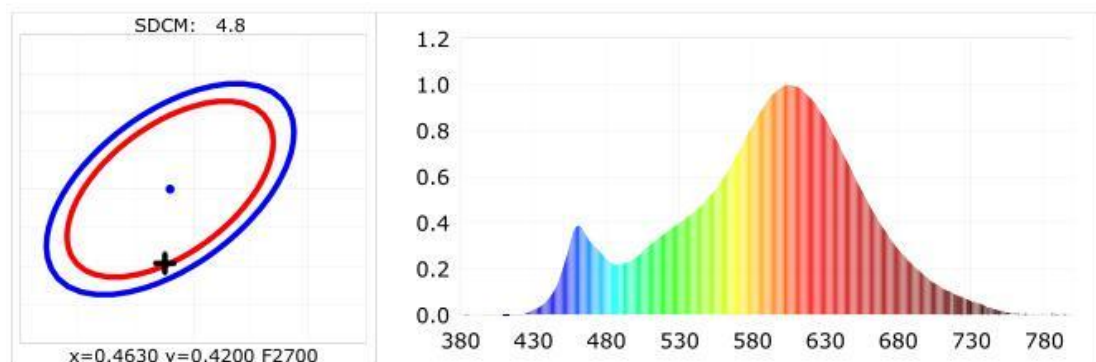
Product Specifications

Model Number: LED filament bulb C35
Light Source: LED filament
LEDs Model Qty: 915-28
Material: Gold Thread, Sapphire Holder
Input Voltage(V): 220-240
Lamp Power: 3, 4, 5W
Lamp Luminous efficiency(lm/w): 90-100
CRI(Ra): 80
View angle: 360°
Color Temp.(K): 2700
Working Lifetime(Hours): 30000-50000
Lamp Body Material: Crystal Glass
Light Transmittance: >98%
Base Type: E14, Iron-nickled
Lamp Size(mm): 35*100

Product Applications:

Local lighting; decorative lighting; hotel; table light;
wall light; reading light; KTV; cafe and residential lighting.

Test Report



DEMASLED

Lamp Size



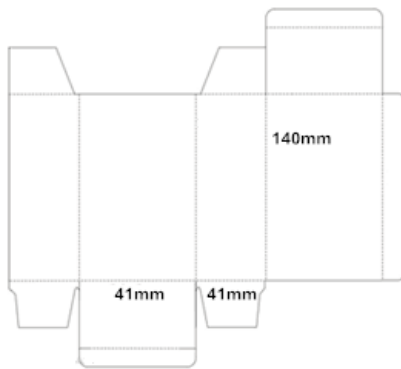
Lamp Structure



DEMASLED

Package

1. Color box



2. Carton Size

